

# **Peer Group Analysis**

## **Raiffeisen 337 - Strategic Asset Allocation\***

### **Raiffeisen Global Allocation Strategies Plus (ex R 338)\***



**\* Tranche con Track Record più lungo**

Source: Morningstar Direct

# Peer Group Comparison



	Inception Date	ISIN	Standard Deviation 3 anni	ytd	1 anno	3 anni p.a.	2012	2011	2010	2009
				01.01.13	01.03.12	01.03.10	01.01.12	01.01.11	01.01.10	01.01.09
				28.02.13	28.02.13	28.02.13	31.12.12	31.12.11	31.12.10	31.12.09
Raiffeisen 337-Strat Alloc Master I I T	04.04.2008	AT0000A090G0	6,78	-0,19	3,92	12,74	10,33	8,14	24,96	25,56
Raiffeisen-GlobalAll-StrategiesPlus S T	04.04.2008	AT0000A090H8	7,35	-0,90	0,17	10,95	6,32	10,91	18,10	21,90
Invesco Balanced-Risk Alloc E	01.09.2009	LU0432616901	6,28	1,07	1,87	10,71	6,60	11,05	12,75	
AC Risk Parity 12 Fund EUR A	05.09.2008	LU0374107992	9,86	-2,06	2,25	7,27	9,82	2,57	13,00	7,89
Nordea-1 Stable Return BP	02.11.2005	LU0227384020	4,21	2,30	6,12	5,93	5,12	3,32	9,50	11,98
Zest Global Strategy R	26.07.2007	LU0312243222	3,91	0,65	2,06	5,84	7,67	-3,22	9,86	
M&G Dynamic Allocation A EUR Acc	03.12.2009	GB00B56H1S45	7,12	2,74	6,11	5,81	9,45	-0,50	7,78	
Selector EMG Ivy Asset Strategy A (EUR)	08.02.2010	LU0464265767	12,89	5,26	6,98	5,67	6,60	5,88	1,58	15,99
Arty	30.05.2008	FR0010611293	7,42	1,51	8,12	4,80	13,43	-6,77	7,61	22,63
PIMCO GIS Gbl Multi-Asset E EUR Hdg	22.06.2009	IE00B4YYY703	10,55	-0,22	0,37	4,74	6,66	-2,67	8,42	-2,81
Carmignac Patrimoine E EUR Acc	02.07.2006	FR0010306142	6,24	1,59	3,78	3,97	4,89	-1,25	6,40	16,56
MS INV F Diversified Alpha Plus B	03.06.2008	LU0299417690	14,48	0,29	3,55	3,44	5,87	-6,35	5,57	18,87
BGF Global Allocation Hdg C2 EUR	22.04.2005	LU0212926058	11,32	2,76	0,47	3,35	4,46	-2,70	2,59	8,35
Echiquier Patrimoine	06.01.1995	FR0010434019	2,68	1,16	3,31	1,77	6,12	-17,50	17,11	15,47
Finlabo Inv Dynamic Equity R	24.07.2006	LU0507282696	8,50	6,68	7,12	1,67	3,73	-3,01	0,89	
Fidelity Multi Asset St Def E-Ac-EUR-Hdg	19.01.2009	LU0393653679	3,77	1,32	3,04	1,18	7,70	-12,33	2,94	15,43
Convictions Premium A	17.10.2003	FR0010687038	6,72	0,23	1,75	-0,81	12,31	-7,87		

Fondi Raiffeisen: Track Record più lungo

Source: Morningstar Direct

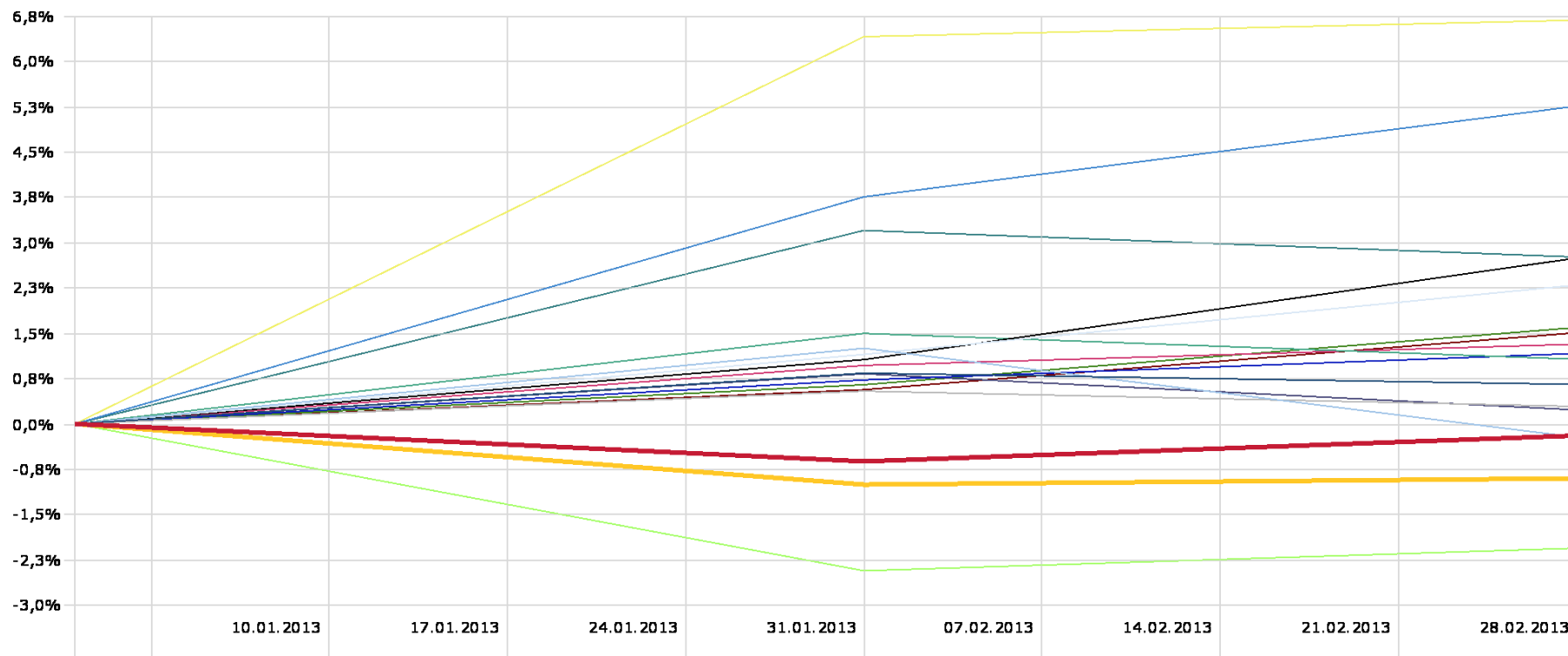
dati al 28.02.2013

data dell'elaborazione: 07.03.2013

# Performance YTD

## Investment Growth

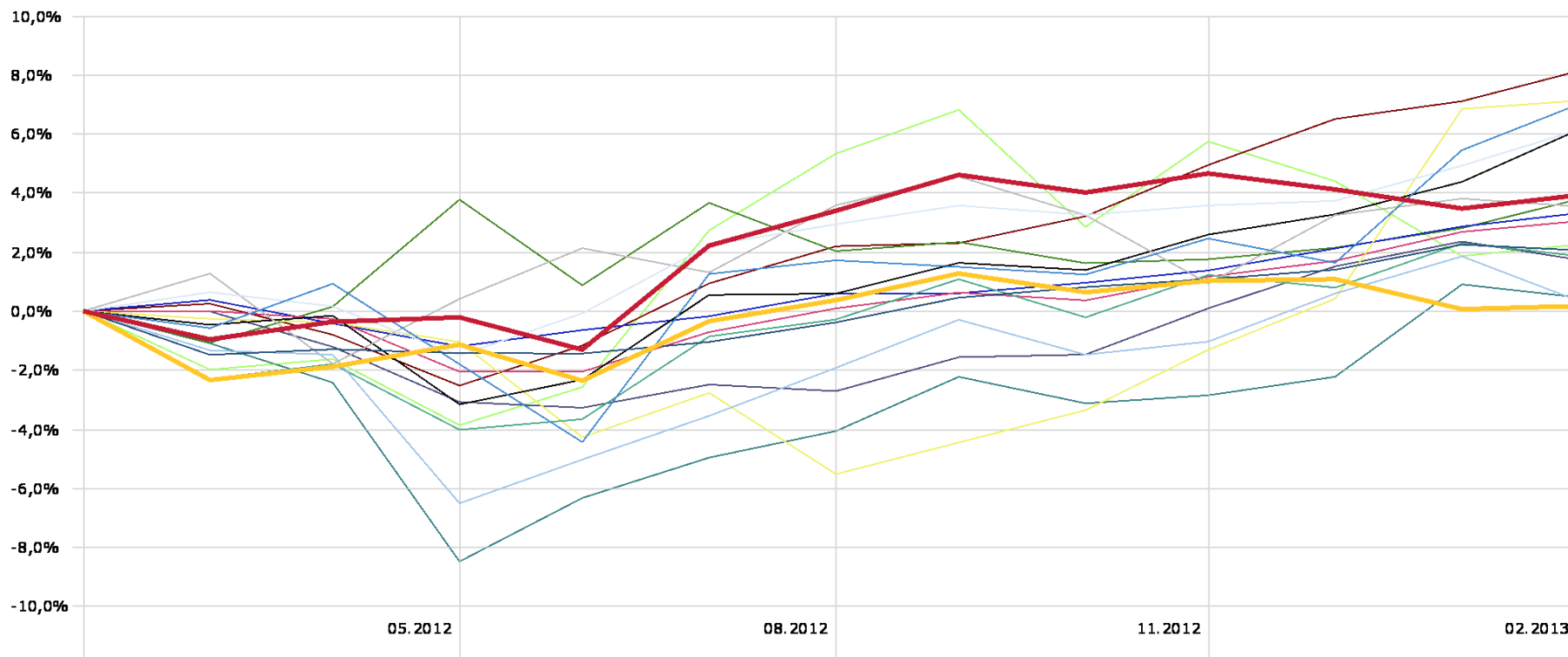
Time Period: 01.01.2013 to 28.02.2013



# Performance 1 anno

## Investment Growth

Time Period: 01.03.2012 to 28.02.2013

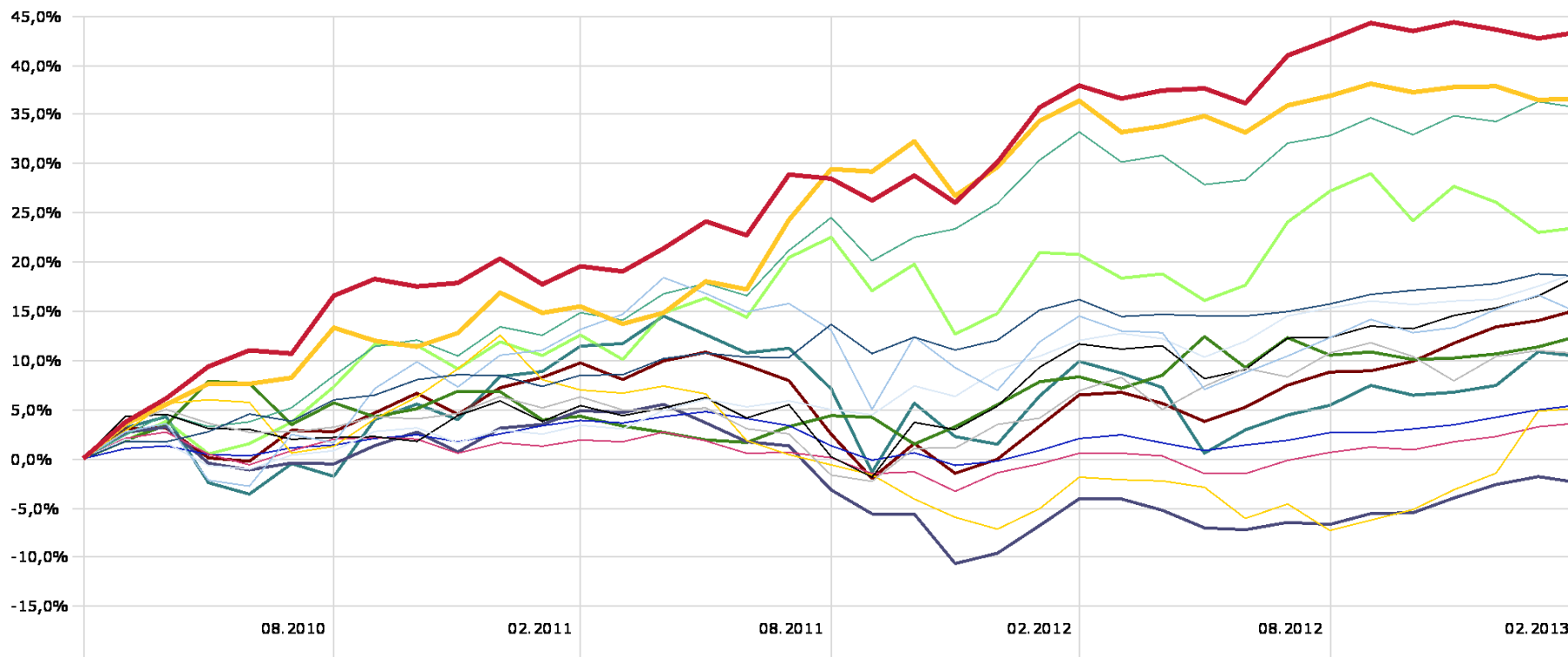


— Raiffeisen 337-Strat Alloc Master I I T	3,9	— Raiffeisen-GlobalAll-StrategiesPlus S T	0,2	— Zest Global Strategy R	2,1
— Selector EMG Ivy Asset Strategy A (EUR)	7,0	— PIMCO GIS Gbl Multi-Asset E EUR Hdg	0,4	— Nordea-1 Stable Return BP	6,1
— MS INVF Diversified Alpha Plus B	3,5	— M&G Dynamic Allocation A EUR Acc	6,1	— Invesco Balanced-Risk Alloc E	1,9
— Finlabo Inv Dynamic Equity R	7,1	— Fidelity Multi Asset St Def E-Ac-EUR-Hdg	3,0	— Echiquier Patrimoine	3,3
— Convictions Premium A	1,7	— Carmignac Patrimoine E EUR Acc	3,8	— BGF Global Allocation Hdg C2 EUR	0,5
— Arty	8,1	— AC Risk Parity 12 Fund EUR A	2,3		

# Performance 3 anni

## Investment Growth

Time Period: 01.03.2010 to 28.02.2013

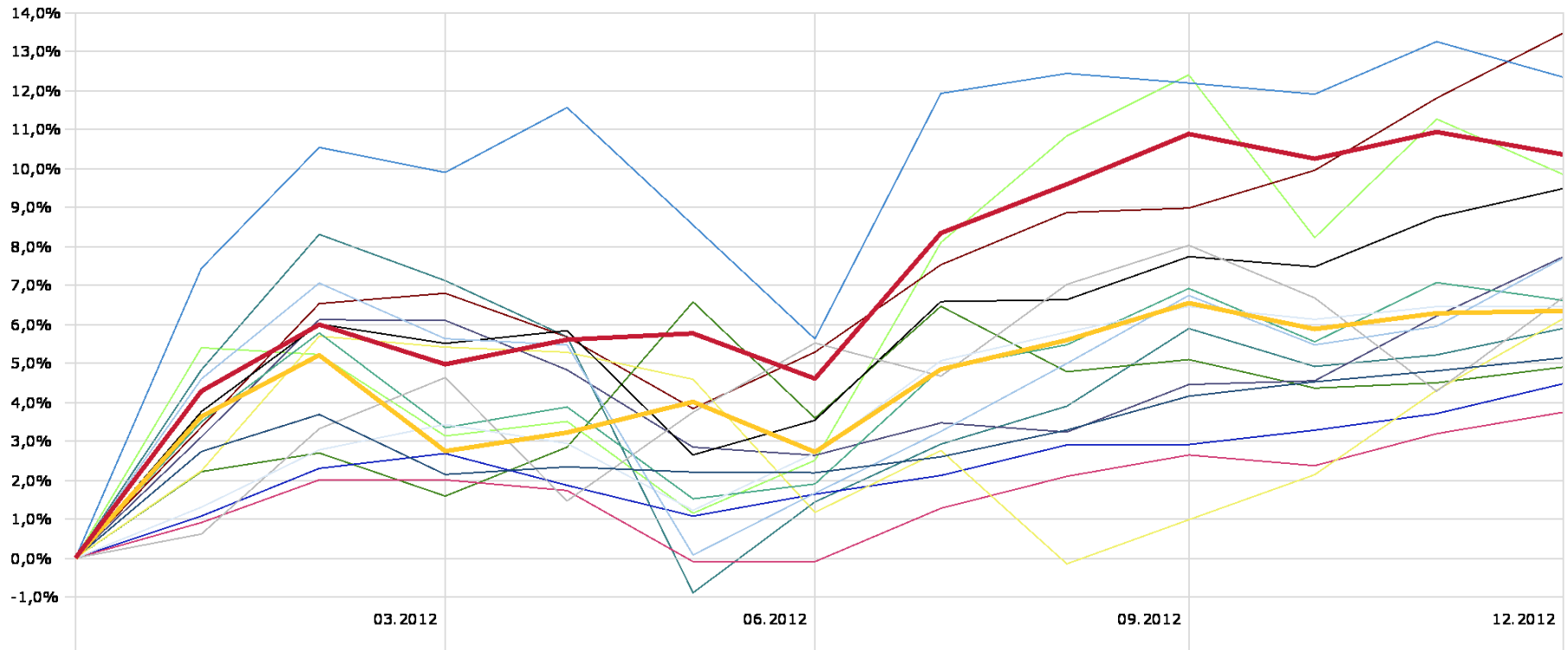


— Raiffeisen 337-Strat Alloc Master I I T	43,3	— Raiffeisen-GlobalAll-StrategiesPlus S T	36,6	— Zest Global Strategy R	18,6
— PIMCO GIS Glibl Multi-Asset E EUR Hdg	14,9	— Nordea-1 Stable Return BP	18,9	— MS INV F Diversified Alpha Plus B	10,7
— M&G Dynamic Allocation A EUR Acc	18,5	— Invesco Balanced-Risk Alloc E	35,7	— Finlabo Inv Dynamic Equity R	5,1
— Fidelity Multi Asset St Def E-Ac-EUR-Hdg	3,6	— Echiquier Patrimoine	5,4	— Convictions Premium A	-2,4
— Carmignac Patrimoine E EUR Acc	12,4	— BGF Global Allocation Hdg C2 EUR	10,4	— Arty	15,1
— AC Risk Parity 12 Fund EUR A	23,5				

# Performance 2012

## Investment Growth

Time Period: 01.01.2012 to 31.12.2012



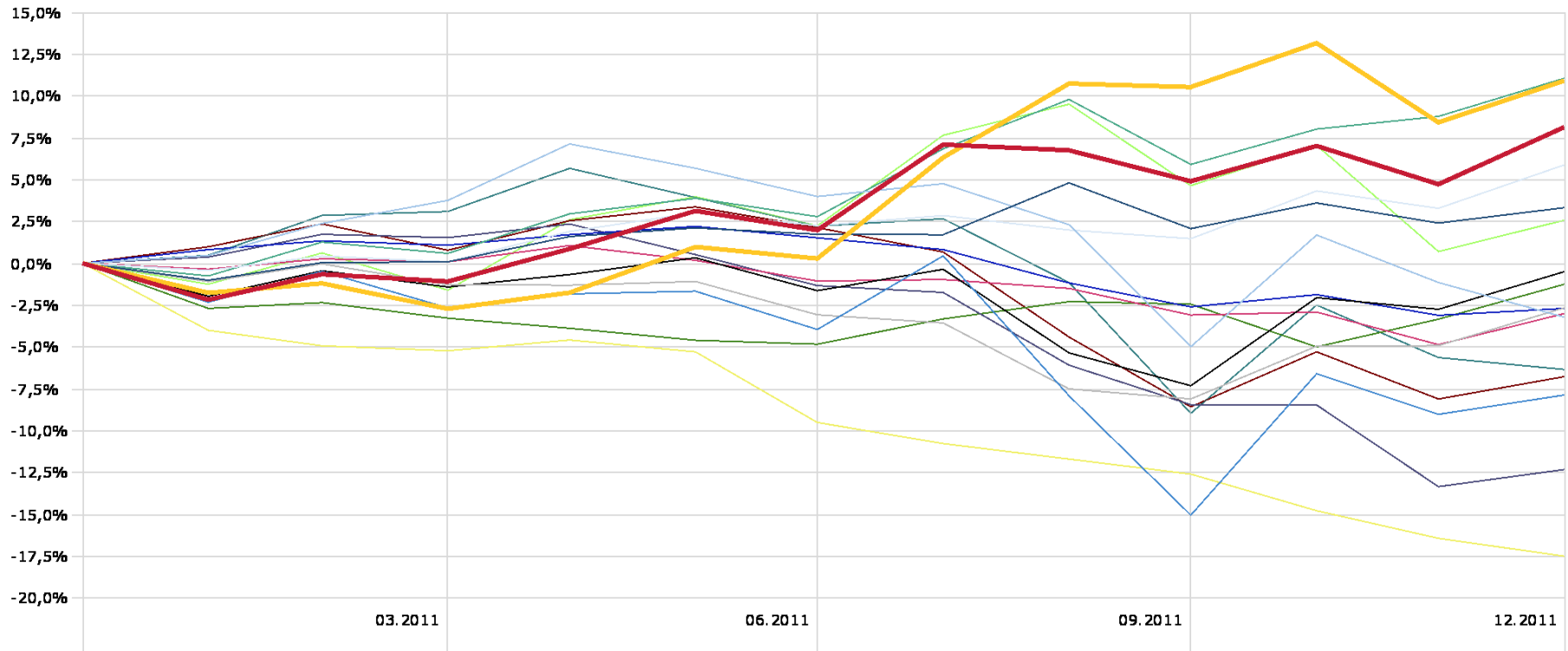
— Raiffeisen 337-Strat Alloc Master I I T	10,4	— Raiffeisen-GlobalAll-StrategiesPlus S T	6,3	— Zest Global Strategy R	5,1
— Selector EMG Ivy Asset Strategy A (EUR)	12,3	— PIMCO GIS Gbl Multi-Asset E EUR Hdg	7,7	— Nordea-1 Stable Return BP	6,4
— MS INVF Diversified Alpha Plus B	6,7	— M&G Dynamic Allocation A EUR Acc	9,5	— Invesco Balanced-Risk Alloc E	6,6
— Finlabo Inv Dynamic Equity R	6,1	— Fidelity Multi Asset St Def E-Ac-EUR-Hdg	3,7	— Echiquier Patrimoine	4,5
— Convictions Premium A	7,7	— Carmignac Patrimoine E EUR Acc	4,9	— BGF Global Allocation Hdg C2 EUR	5,9
— Arty	13,5	— AC Risk Parity 12 Fund EUR A	9,8		



# Performance 2011

## Investment Growth

Time Period: 01.01.2011 to 31.12.2011

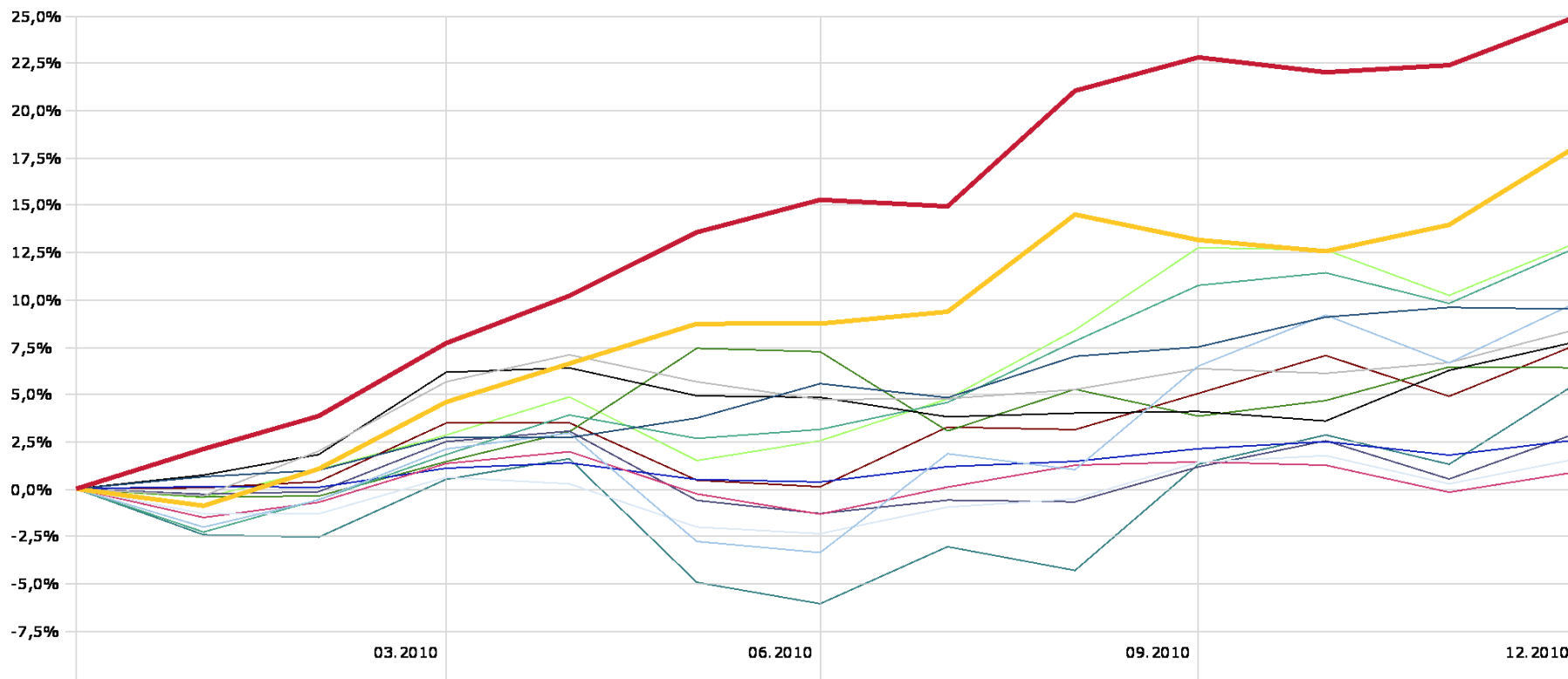


— Raiffeisen 337-Strat Alloc Master I I T	8,1	— Raiffeisen-GlobalAll-StrategiesPlus S T	10,9	— Zest Global Strategy R	3,3
— Selector EMG Ivy Asset Strategy A (EUR)	-7,9	— PIMCO GIS Gbl Multi-Asset E EUR Hdg	-3,2	— Nordea-1 Stable Return BP	5,9
— MS INVF Diversified Alpha Plus B	-2,7	— M&G Dynamic Allocation A EUR Acc	-0,5	— Invesco Balanced-Risk Alloc E	11,1
— Finlabo Inv Dynamic Equity R	-17,5	— Fidelity Multi Asset St Def E-Ac-EUR-Hdg	-3,0	— Echiquier Patrimoine	-2,7
— Convictions Premium A	-12,3	— Carmignac Patrimoine E EUR Acc	-1,3	— BGF Global Allocation Hdg C2 EUR	-6,3
— Arty	-6,8	— AC Risk Parity 12 Fund EUR A	2,6		

# Performance 2010

## Investment Growth

Time Period: 01.01.2010 to 31.12.2010



— Raiffeisen 337-Strat Alloc Master I I T	25,0	— Raiffeisen-GlobalAll-StrategiesPlus S T	18,1	— Zest Global Strategy R	9,5
— PIMCO GIS GIBI Multi-Asset E EUR Hdg	9,9	— Nordea-1 Stable Return BP	1,6	— MS INV F Diversified Alpha Plus B	8,4
— M&G Dynamic Allocation A EUR Acc	7,8	— Invesco Balanced-Risk Alloc E	12,7	— Fidelity Multi Asset St Def E-Ac-EUR-Hdg	0,9
— Echiquier Patrimoine	2,6	— Convictions Premium A	2,9	— Carmignac Patrimoine E EUR Acc	6,4
— BGF Global Allocation Hdg C2 EUR	5,6	— Arty	7,6	— AC Risk Parity 12 Fund EUR A	13,0

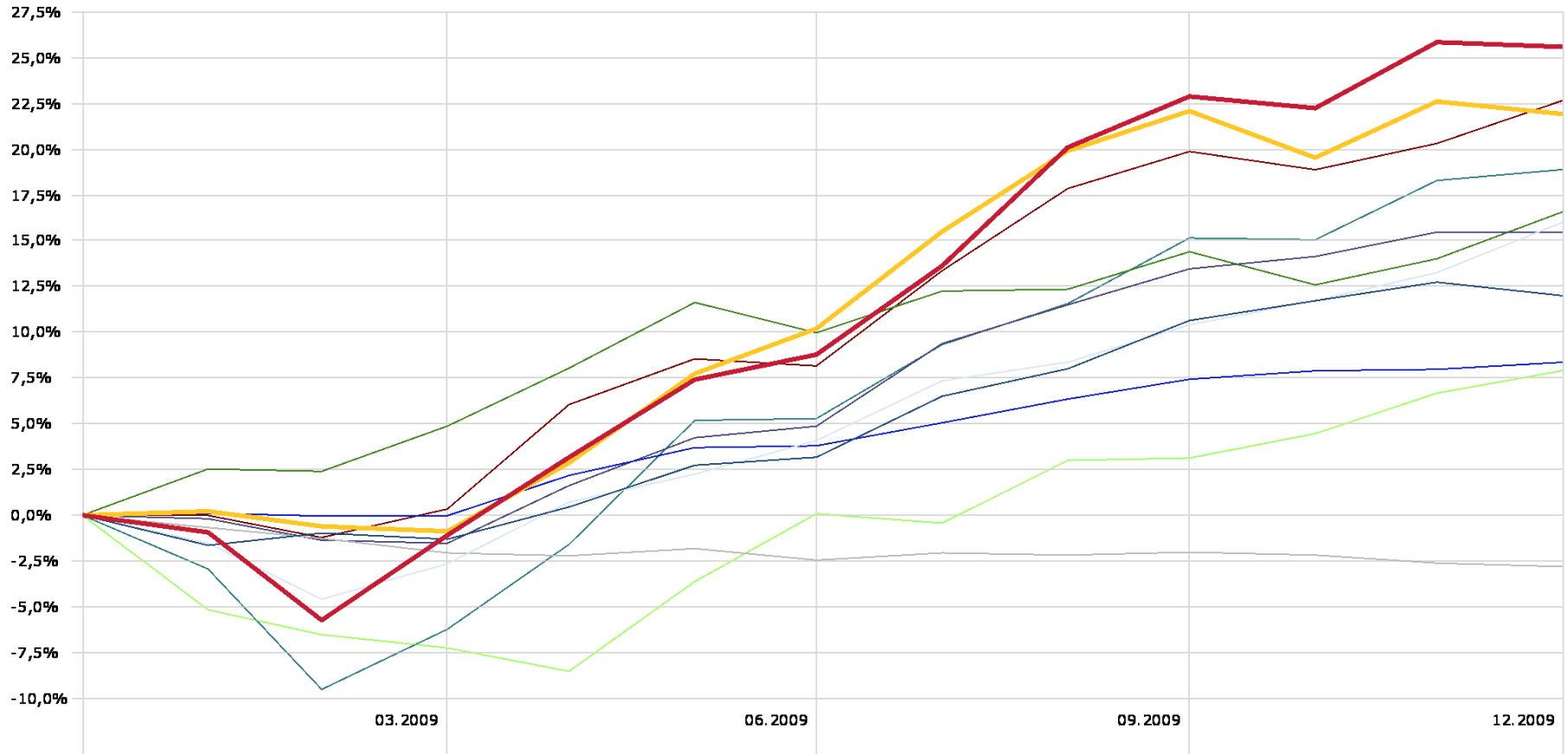
**\*Tranche Istituzionale (Track Record più lungo)**



# Performance 2009

## Investment Growth

Time Period: 01.01.2009 to 31.12.2009



Raiffeisen 337-Strat Alloc Master I I T	25,6	Raiffeisen-GlobalAll-StrategiesPlus S T	21,9	Zest Global Strategy R	12,0
Nordea-1 Stable Return BP	16,0	MS INV F Diversified Alpha Plus B	-2,8	Echiquier Patrimoine	8,3
Convictions Premium A	15,4	Carmignac Patrimoine E EUR Acc	16,6	BGF Global Allocation Hdg C2 EUR	18,9
Arty	22,6	AC Risk Parity 12 Fund EUR A	7,9		

# Disclaimer

---

This document was prepared and designed by Raiffeisen International Fund Advisory GmbH, Vienna, Austria ("Raiffeisen Capital Management" or "RIFA"). Although all information contained therein has been carefully researched, it is for information purposes only, non-binding, based on the current state of knowledge of the persons responsible for its preparation at the time of its completion and subject to change by RIFA at any time without further notice. RIFA is exempted from all liability in connection with this document and the associated oral presentation, in particular with regard to the updated status, correctness and completeness of the included information/sources of information and the actual occurrence of the forecasts contained therein. Furthermore, no forecasts or simulations of an historical performance in this document constitute a reliable indicator of future performance. In addition, investors whose domestic currency differs from the fund's currency should bear in mind that the yield may also rise or fall due to currency fluctuations.

The contents of this document constitute neither an offer nor a buying or selling recommendation nor an investment analysis. In particular, it shall not serve as a replacement for individual investment advisory services or other types of advisory services. If you are interested in a specific product, together with your account manager we shall be pleased to provide you with the prospectus for this product prior to any purchase. Concrete investments should not be made until after a meeting has taken place and subject to discussion and inspection of the prospectus. We should like to point out in particular that securities transactions are sometimes subject to a high degree of risk and that the tax treatment depends on the investor's personal situation and may be subject to future changes.

Raiffeisen Kapitalanlage GmbH – or, for real estate funds, Raiffeisen Immobilien Kapitalanlage GmbH – calculates investment fund performances using the method developed by OeKB (Österreichische Kontrollbank AG), on the basis of data provided by the custodian bank (in case of a suspension of payment of the redemption price, available indicative values are used). Individual costs – such as the subscription fee and any redemption fee in particular – will not be taken into consideration in the performance calculation. Depending on their concrete value, they will reduce a performance accordingly. Please refer to the key investor information (key investor document) or the simplified prospectus (real estate funds) for the maximum subscription fee or any redemption fee. Past performance results do not permit any inferences as to the future performance of a fund or portfolio. Performance is shown as a percentage (excl. charges) while considering reinvestment of dividends. The published prospectus and the key investor information (key investor document) for one of the investment funds outlined in this document may be obtained from [www.rcm.at](http://www.rcm.at) in German language or from [www.rcm-international.com](http://www.rcm-international.com) in English or in your national language. The current versions of the published prospectus and the simplified prospectus for the real estate investment funds described in this document (including all changes since their initial publication) are available in German from [www.rcm.at](http://www.rcm.at).

The information and data contained in this document, in particular texts, parts of texts and picture material, may not be reproduced without RIFA's prior approval.