

# **Peer Group Analysis**

## **Raiffeisen 337 - Strategic Asset Allocation\***

### **Raiffeisen Global Allocation Strategies Plus (ex R 338)\***



**\* Tranche con Track Record più lungo**

Source: Morningstar Direct

# Peer Group Comparison



	Inception Date	ISIN	Standard Deviation 3 anni	ytd	1 anno	2 anni p.a.	3 anni p.a.
				01.01.2012 30.04.2012	01.05.2011 30.04.2012	01.05.2010 30.04.2012	01.05.2009 30.04.2012
Raiffeisen 337-Strat Alloc Master I I T*	04.04.2008	AT0000A090G0	7,35	5,60	13,19	13,78	20,20
Raiffeisen-GlobalAll-StrategiesPlus S T*	04.04.2008	AT0000A090H8	8,20	3,22	16,49	12,60	17,01
Zest Global Strategy R	26.07.2007	LU0312243222	4,47	2,34	4,07	6,17	8,88
Nordea-1 Stable Return BP	02.11.2005	LU0227384020	4,54	2,94	6,94	5,08	8,43
BGF Global Allocation Hdq C2 EUR	22.04.2005	LU0212926058	11,53	5,68	-6,33	1,41	8,06
Arty	30.05.2008	FR0010611293	8,05	5,67	-3,92	1,21	7,03
Carmignac Patrimoine E	02.07.2006	FR0010306142	6,08	2,84	5,65	2,41	5,25
Fidelity Multi Asset St Def E-Ac-EUR-Hdq	19.01.2009	LU0393653679	4,56	1,73	-2,36	-1,19	3,42
Finlabo Inv Dynamic Equity R	24.07.2006	LU0507282696	7,96	5,28	-8,96	-3,80	2,81
Echiquier Patrimoine	06.01.1995	FR0010434019	2,84	1,87	-2,55	0,15	2,54
Convictions Premium A	17.10.2003	FR0010687038	7,24	4,83	-10,18	-4,18	2,43
MS INVF Diversified Alpha Plus B	03.06.2008	LU0299417690	14,11	1,47	0,08	0,00	2,10
STS Schroder Global Dynamic Bal B Acc	28.09.2009	LU0451417991		1,46	-1,76	0,95	
Selector Ivy Asset Strategy A1	08.02.2010	LU0464265767		11,55	4,68	2,67	
PIMCO GIS Gbl Multi-Asset E EUR Hdq	22.06.2009	IE00B4YYY703		5,47	-4,71	4,36	
M&G Dynamic Allocation A EUR Acc	03.12.2009	GB00B56H1S45		5,83	6,00	3,28	
Invesco Balanced-Risk Alloc E	01.09.2009	LU0432616901		3,88	12,02	11,88	

\*Fondi Raiffeisen: (Track Record più lungo)

Source: Morningstar Direct

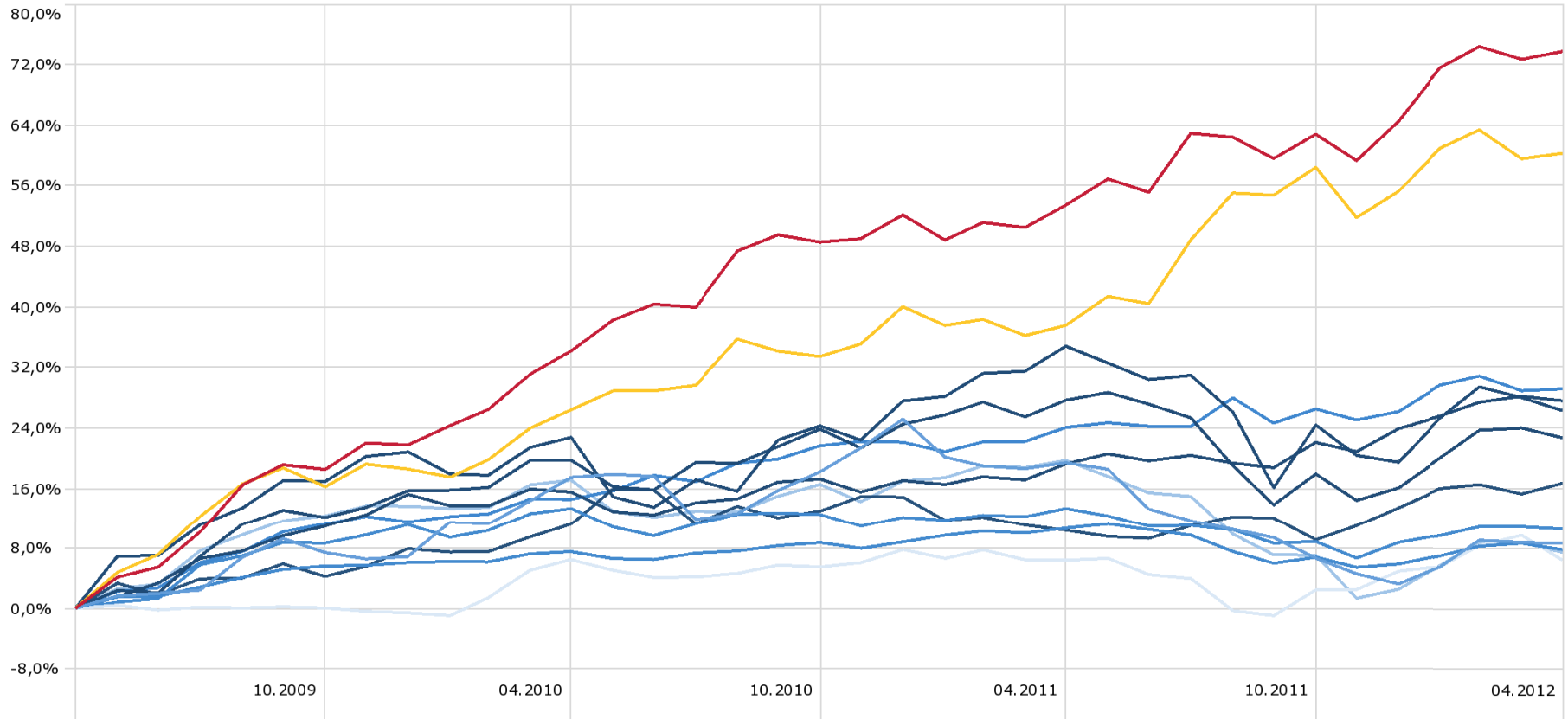
dati al 30.04.2012

data dell'elaborazione: 03.05.2012

# Performance 3 anni

## Investment Growth

Time Period: 01.05.2009 to 30.04.2012



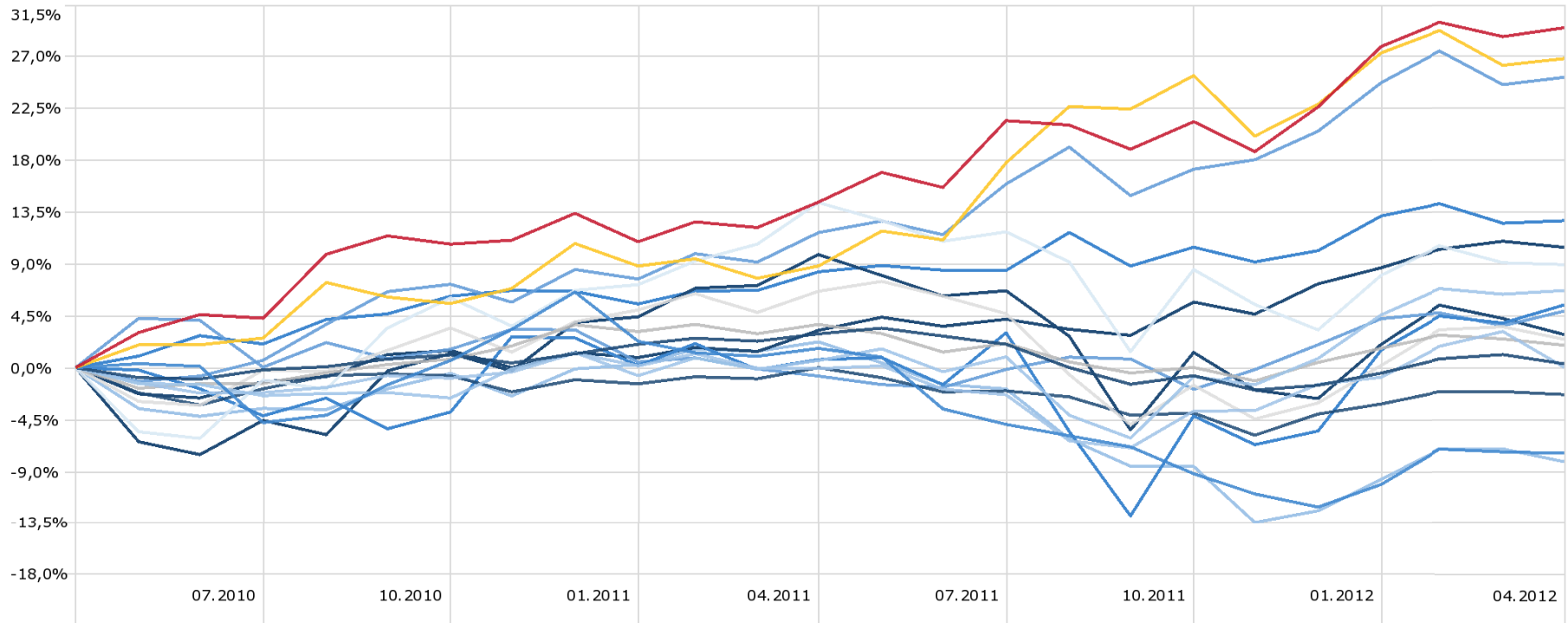
Raiffeisen 337-Strat Alloc Master I I T	73,7	Raiffeisen-GlobalAll-StrategiesPlus S T	60,2	Finlabo Inv Dynamic Equity R	8,7
Echiquier Patrimoine	7,8	MS INV F Diversified Alpha Plus B	6,4	Arty	22,6
Fidelity Multi Asset St Def E-Ac-EUR-Hdg	10,6	Carmignac Patrimoine E	16,6	BGF Global Allocation Hdg C2 EUR	26,2
Nordea-1 Stable Return BP	27,5	Zest Global Strategy R	29,1	Convictions Premium A	7,5

## Fondi Raiffeisen: Share Class con Track Record più lungo

# Performance 2 anni

## Investment Growth

Time Period: 01.05.2010 to 30.04.2012



— Raiffeisen 337-Strat Alloc Master I I T	29,5	— Raiffeisen-GlobalAll-StrategiesPlus S T	26,8	— Finlabo Inv Dynamic Equity R	-7,5
— Echiquier Patrimoine	0,3	— M&G GlobalDynamicAllocation A EUR Acc	6,7	— MS INV F Diversified Alpha Plus B	0,0
— PIMCO GIS GIBI Multi-Asset E EUR Hdg	8,9	— STS Schroder Global Dynamic Bal B Acc	1,9	— Arty	2,4
— Fidelity Multi Asset St Def E-Ac-EUR-Hdg	-2,4	— Selector Ivy Asset Strategy A1	5,4	— Invesco Balanced-Risk Alloc E	25,2
— Carmignac Patrimoine E	4,9	— BGF Global Allocation Hdg C2 EUR	2,8	— Nordea-1 Stable Return BP	10,4
— Zest Global Strategy R	12,7	— Convictions Premium A	-8,2		

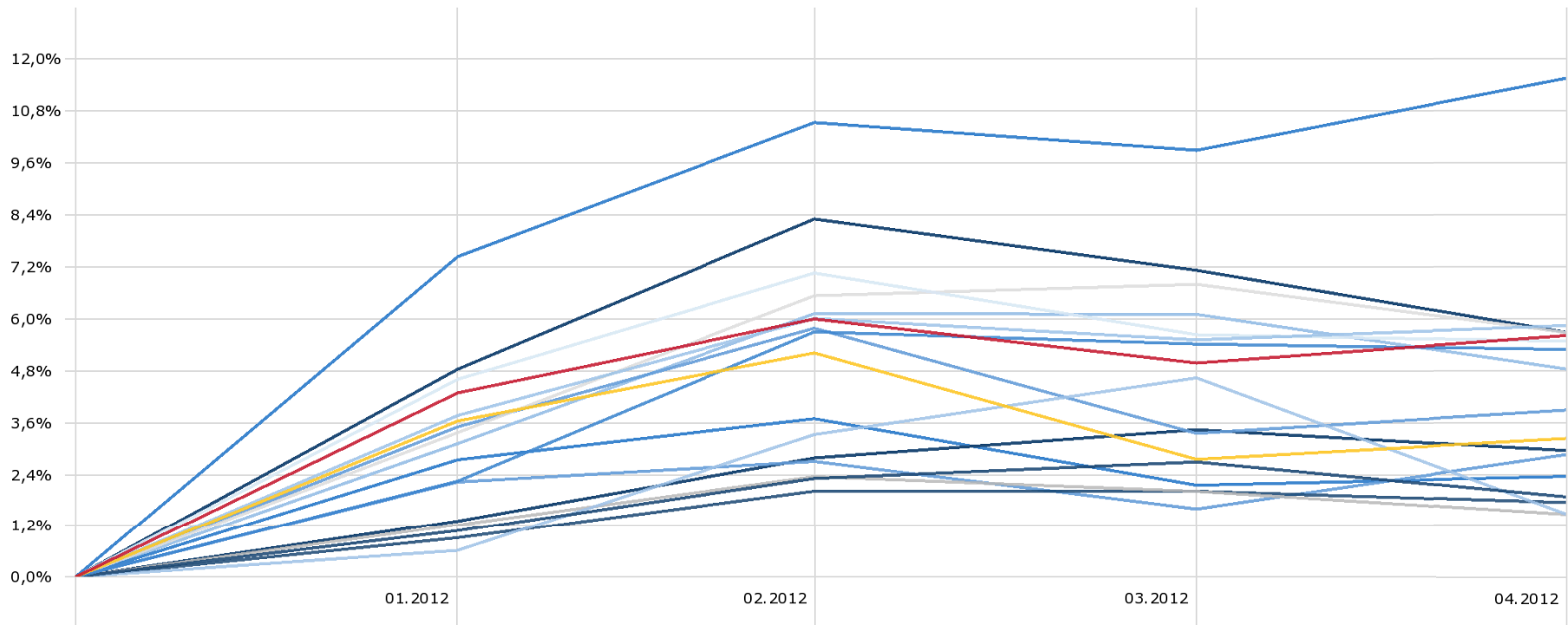
**Fondi Raiffeisen: Share Class con Track Record più lungo**

# Performance YTD



## Investment Growth

Time Period: 01.01.2012 to 30.04.2012



— Raiffeisen 337-Strat Alloc Master I I T	5,6	— Raiffeisen-GlobalAll-StrategiesPlus S T	3,2	— Finlabo Inv Dynamic Equity R	5,3
— Echiquier Patrimoine	1,9	— M&G GlobalDynamicAllocation A EUR Acc	5,8	— MS INV F Diversified Alpha Plus B	1,5
— PIMCO GIS GIBI Multi-Asset E EUR Hdg	5,5	— STS Schroder Global Dynamic Bal B Acc	1,5	— Arty	5,7
— Fidelity Multi Asset St Def E-Ac-EUR-Hdg	1,7	— Selector Ivy Asset Strategy A1	11,6	— Invesco Balanced-Risk Alloc E	3,9
— Carmignac Patrimoine E	2,8	— BGF Global Allocation Hdg C2 EUR	5,7	— Nordea-1 Stable Return BP	2,9
— Zest Global Strategy R	2,3	— Convictions Premium A	4,8		

**Fondi Raiffeisen: Share Class con Track Record più lungo**

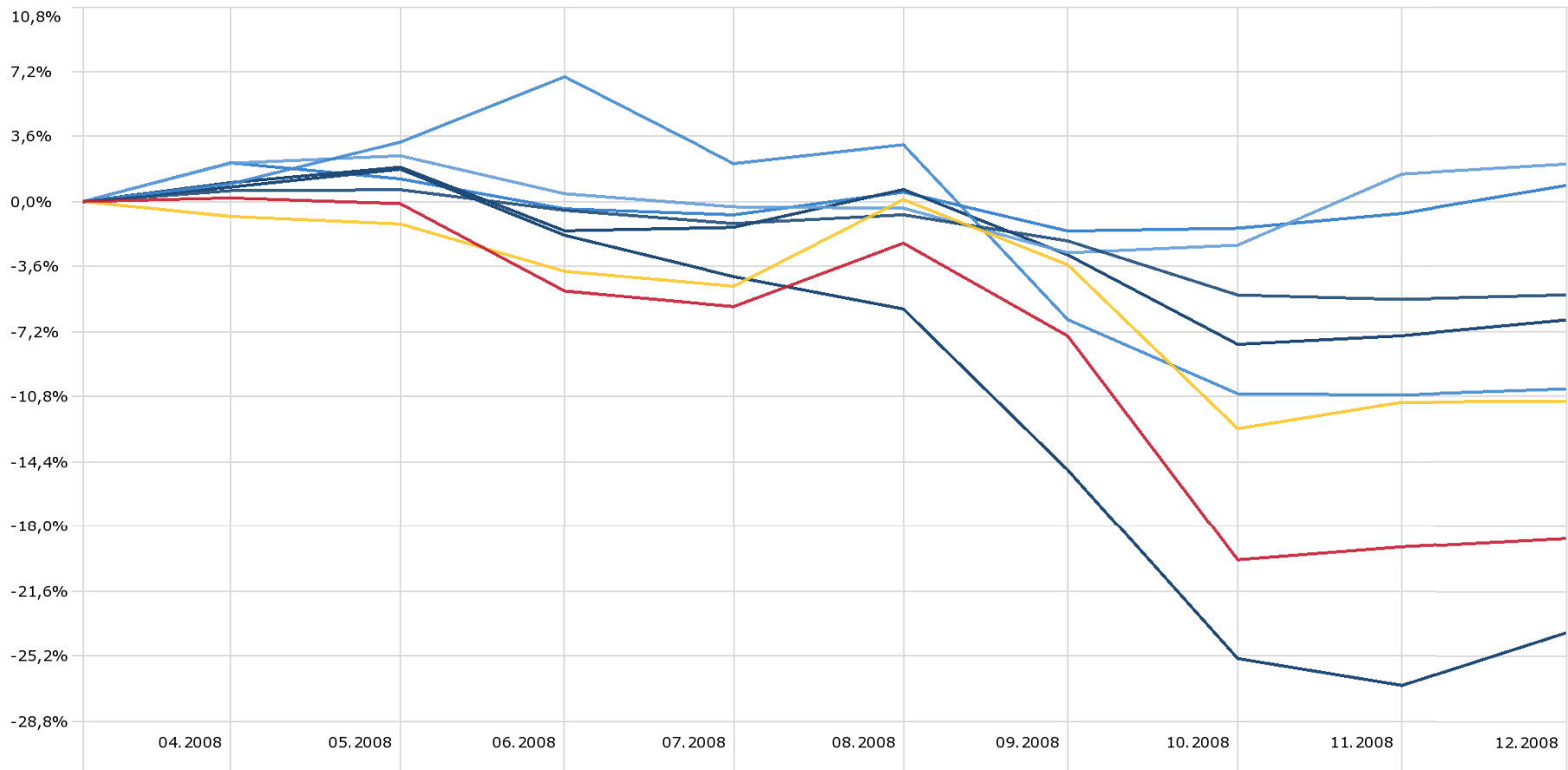
Source: Morningstar Direct

# Performance 2008 dal lancio dei fondi Raiffeisen\*



## Investment Growth

Time Period: 04.04.2008 to 30.12.2008



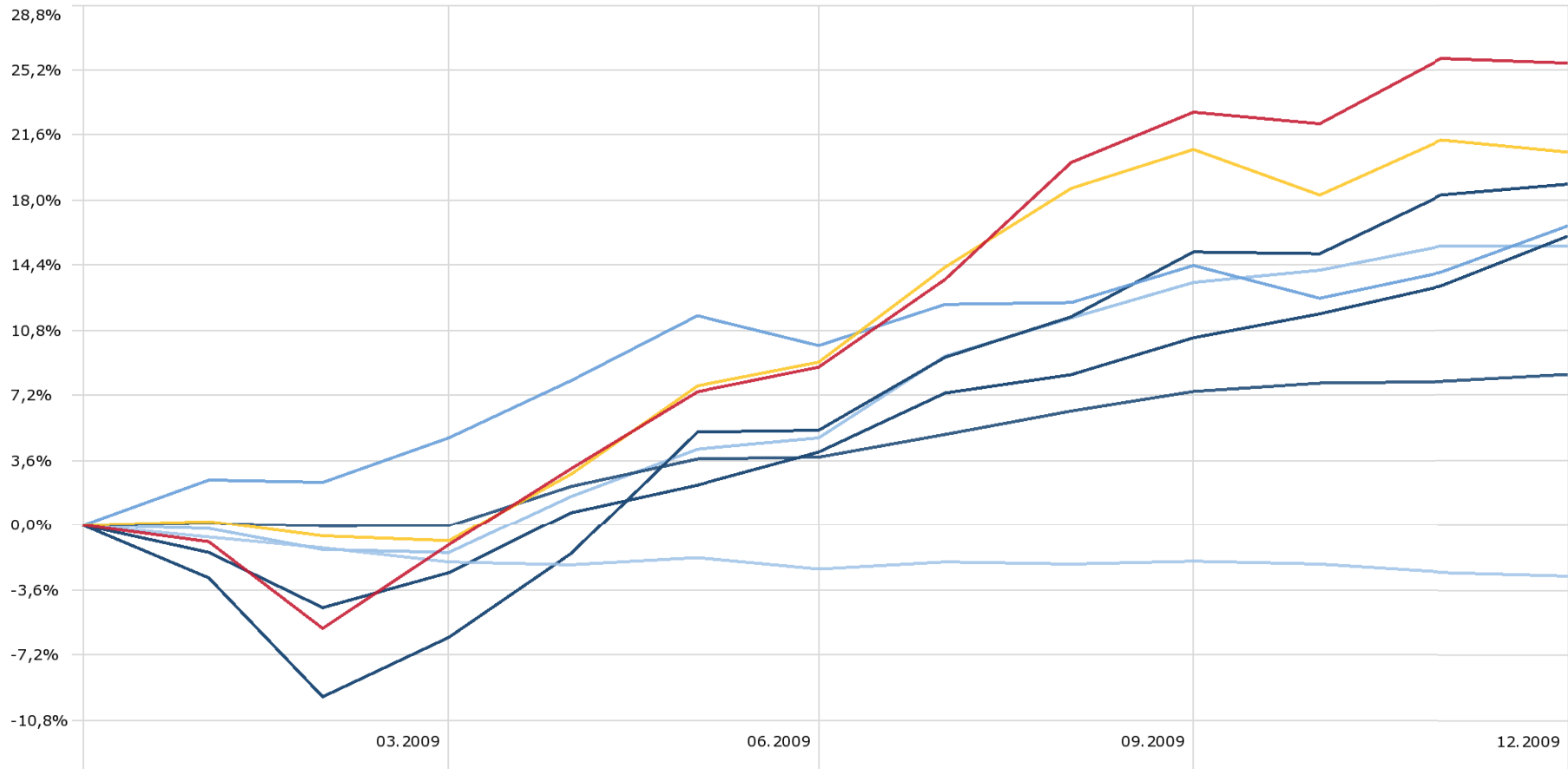
**\*data di lancio dei fondi Raiffeisen: 04.04.2008**  
**Fondi Raiffeisen: Share Class con Track Record più lungo**

# Performance 2009



## Investment Growth

Time Period: 01.01.2009 to 31.12.2009



Raiffeisen 337-Strat Alloc Master I I T	25,6	Raiffeisen-GlobalAll-StrategiesPlus S T	20,6	Echiquier Patrimoine	8,3
MS INV F Diversified Alpha Plus B	-2,8	Carmignac Patrimoine E	16,6	BGF Global Allocation Hdg C2 EUR	18,9
Nordea-1 Stable Return BP	16,0	Convictions Premium A	15,4		

**Fondi Raiffeisen: Share Class con Track Record più lungho**

Source: Morningstar Direct

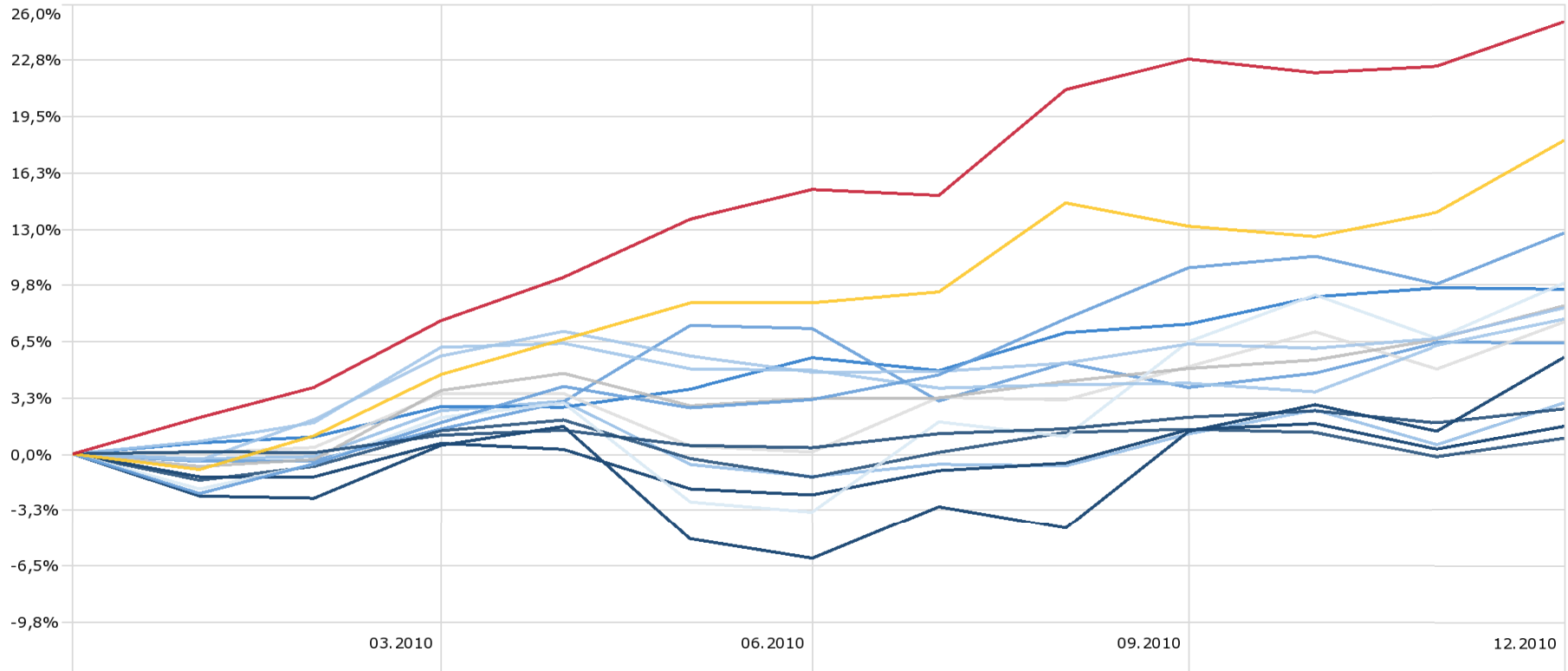


# Performance 2010



## Investment Growth

Time Period: 01.01.2010 to 31.12.2010



— Raiffeisen 337-Strat Alloc Master I I T	25,0	— Raiffeisen-GlobalAll-StrategiesPlus S T	18,1	— Echiquier Patrimoine	2,6
— Invesco Balanced-Risk Alloc E	12,7	— M&G GlobalDynamicAllocation A EUR Acc	7,8	— MS INV F Diversified Alpha Plus B	8,4
— PIMCO GIS Gbl Multi-Asset E EUR Hdg	9,9	— STS Schroder Global Dynamic Bal B Acc	8,5	— Arty	7,6
— Fidelity Multi Asset St Def E-Ac-EUR-Hdg	0,9	— Carmignac Patrimoine E	6,4	— BGF Global Allocation Hdg C2 EUR	5,6
— Nordea-1 Stable Return BP	1,6	— Zest Global Strategy R	9,5	— Convictions Premium A	2,9

**Fondi Raiffeisen: Share Class con Track Record più lungo**

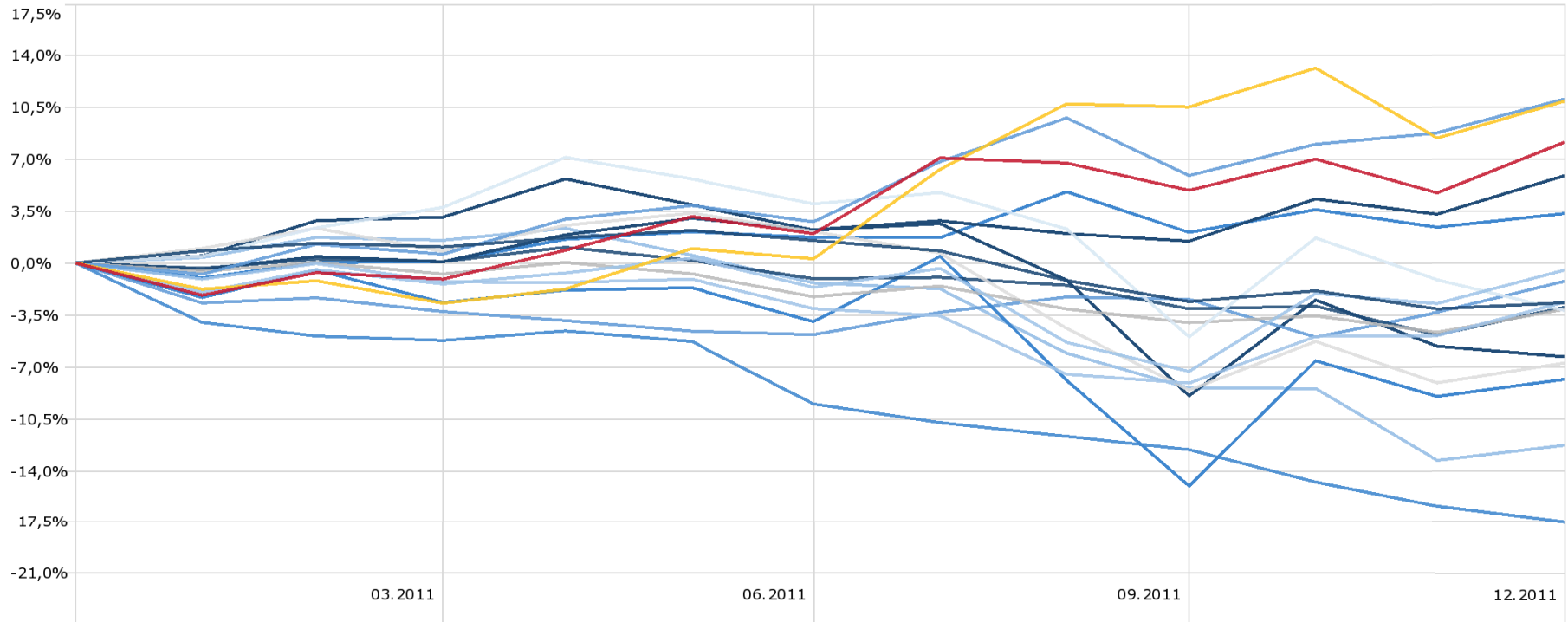
Source: Morningstar Direct



# Performance 2011

## Investment Growth

Time Period: 01.01.2011 to 31.12.2011



Raiffeisen 337-Strat Alloc Master I I T	8,1	Raiffeisen-GlobalAll-StrategiesPlus S T	10,9	Echiquier Patrimoine	-2,7
Invesco Balanced-Risk Alloc E	11,1	M&G GlobalDynamicAllocation A EUR Acc	-0,5	MS INV F Diversified Alpha Plus B	-2,7
PIMCO GIS GIBI Multi-Asset E EUR Hdg	-3,2	STS Schroder Global Dynamic Bal B Acc	-3,1	Arty	-6,8
Fidelity Multi Asset St Def E-Ac-EUR-Hdg	-3,0	Selector Ivy Asset Strategy A1	-7,9	Finlabo Inv Dynamic Equity R	-17,5
Carmignac Patrimoine E	-1,3	BGF Global Allocation Hdg C2 EUR	-6,3	Nordea-1 Stable Return BP	5,9
Zest Global Strategy R	3,3	Convictions Premium A	-12,3		

**Fondi Raiffeisen: Share Class con Track Record più lungo**

# Disclaimer

---

This document was prepared and designed by Raiffeisen International Fund Advisory GmbH, Vienna, Austria ("Raiffeisen Capital Management" or "RIFA"). Although all information contained therein has been carefully researched, it is for information purposes only, non-binding, based on the current state of knowledge of the persons responsible for its preparation at the time of its completion and subject to change by RIFA at any time without further notice. RIFA is exempted from all liability in connection with this document and the associated oral presentation, in particular with regard to the updated status, correctness and completeness of the included information / sources of information and the actual occurrence of the forecasts contained therein. Furthermore, no forecasts or simulated historical performance in this document constitute a reliable indicator of future performance. Regarding our clients whose home currency differs from the fund currency, we would like to point out that the yield may rise or fall also due to currency fluctuations.

The contents of this document constitute neither an offer nor a buying or selling recommendation nor an investment analysis. In particular, they shall not serve as a replacement for individual investment advisory services or other types of advisory services. Prior to investing in any of our products, we would be pleased to provide you with the full prospectus, which can be used for informational purposes and in addition to the services provided by your financial advisor. Concrete investments should not be made before an advisory appointment has taken place, which should consider the full prospectus. We would like to point out in particular that securities transactions are sometimes subject to a high degree of risk and that the tax treatment depends on the investor's personal situation and may be subject to future changes.

The performance of investment funds is calculated by Raiffeisen Kapitalanlage GmbH and Raiffeisen Immobilien Kapitalanlage GmbH in accordance with the method developed by the OeKB (Österreichische Kontrollbank AG) on the basis of data provided by the custodian bank (in the event that the payment of the redemption price is suspended, using an indicative price). Individual costs such as the subscription and redemption fees have not been included in the performance calculation. Where these costs are included this will result in a lower performance figure according to the amount of the subscription and redemption fees. The maximum level of the subscription and redemption fees may be found in the simplified prospectus. The performance of the Raiffeisen Capital Management Luxemburg SICAV and its subfunds is calculated by RBC Dexia Investor Services Bank S.A. using the NAV of the fund reflecting the deduction of all fees and expenses related to the management of the fund (e.g. management fees, custodian fees, transaction costs and other expenses). Past performance results do not permit any reliable inferences as to the future performance of an investment fund or portfolio. Performance is shown as a percentage (excl. charges) while considering reinvestment of dividends. The published prospectuses as well as key investor information or the simplified prospectuses for the investment funds described in this document are available at [www.rcm-international.com](http://www.rcm-international.com) or [www.rcm-international.com/sicav](http://www.rcm-international.com/sicav) in English language or in your national language.

The information and data contained in this document, in particular texts, parts of texts and picture material, may not be reproduced without RIFA's prior approval.